

Introducing Biotube® EasyPak™



Complete, Ready-to-Install Pump Package in a Box

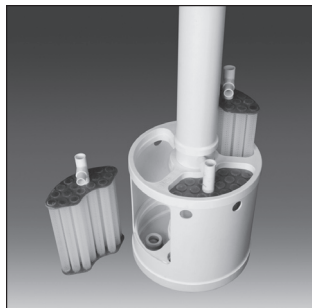
Simplifies Design and Installation



Orenco's new Biotube® EasyPak™ is the first pump package designed specifically for use in pump tanks for residential septic systems. No more "pump on a block." No more parts and pieces. Everything you need, in a single

box, ready-to-install, ready to drop into a pump tank. With EasyPak, you get faster installs, fewer installation errors, fewer call-backs. At a comparable price to a low-head "pump on a block."

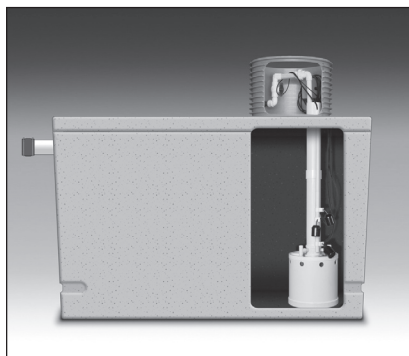
A Better Product at a Comparable Cost



With EasyPak, your customers get protection for a drainfield that's worth thousands of dollars and may, in fact, be irreplaceable. That's because EasyPak includes three built-in Biotube® filter cartridges that prevent solids from clogging drainfields or other downstream components. EasyPak

also includes a long-lasting, high-performing 4" turbine pump. All EasyPak pump packages include a 5-year warranty on materials and workmanship from the date of manufacture.

Standard Packages and Ordering Codes



Demand-dose and timed-dose packages are available.

Note that all EasyPak vaults are a low-profile design – just 15" high – which allows pumping to nearly the bottom of the tank.

An industry-first for filtering pump vaults.



Free EasyPak Design Aid CD-Rom

Our EasyPak Design Aid CD-Rom includes everything you'll need to design, specify, install, and promote EasyPak. It also includes our brand new EasyPak Select™ software program to help you choose the correct system for the application. EasyPak Select automatically calculates the correct pump flow rate and total dynamic head for your customer's system.

To order your free EasyPak Design Aid CD-ROM, call Orenco at 800-348-9843. Or you can download everything on the CD by visiting orenco.com.

Continued on back

Biotube® EasyPak™ (continued)

Package Selection

All EasyPak pump packages are available in both demand-dose and timed-dose applications. There are two basic packages, based on dose method and flow rate:

1. **Demand-dose** — The typical package for demand-dose systems is the BEP10DD.

The BEP10DD accommodates flows up to 10 gpm (15 gpm without ¼-in flow control) and can be used to pump from a dosing tank to a gravity drainfield (distribution box, hydrosplitter, etc.). BEP20DD, BEP30DD and BEP50DD systems are available for demand-dose applications that require flows greater than 15 gpm.

2. **Timed-dose** — The typical package for timed-dose systems is the BEP30TDD.

The BEP30TDD accommodates flows up to 40 gpm and can be used for pumping from a dosing tank to a final dispersal area (pressurized drainfields, sand filter, etc.). BEP10TDD systems are available for timed-dose applications with flows of 10 gpm or less, such as drip irrigation. BEP50TDD systems are available for timed-dose applications that require flows of 40 gpm or more, such as large, pressurized drainfields.

Demand Dosing			Timed Dosing		
Model Code	Discharge	Maximum Flow Rate	Model Code	Discharge	Maximum Flow Rate
BEP10DD	Standard	15 GPM	BEP10TDD	Standard	15 GPM
BEP10DD-DB	Drainback	15 GPM	BEP10TDD-DB	Drainback	15 GPM
BEP10DD-CW	Cold Weather	15 GPM	BEP10TDD-CW	Cold Weather	15 GPM
BEP20DD	Standard	25 GPM	BEP20TDD	Standard	25 GPM
BEP20DD-DB	Drainback	25 GPM	BEP20TDD-DB	Drainback	25 GPM
BEP20DD-CW	Cold Weather	25 GPM	BEP20TDD-CW	Cold Weather	25 GPM
BEP30DD	Standard	40 GPM	BEP30TDD	Standard	40 GPM
BEP30DD-DB	Drainback	40 GPM	BEP30TDD-DB	Drainback	40 GPM
BEP30DD-CW	Cold Weather	40 GPM	BEP30TDD-CW	Cold Weather	40 GPM
BEP50DD	Standard	65 GPM	BEP50TDD	Standard	65 GPM
BEP50DD-DB	Drainback	65 GPM	BEP50TDD-DB	Drainback	65 GPM
BEP50DD-CW	Cold Weather	65 GPM	BEP50TDD-CW	Cold Weather	65 GPM

Nomenclature

BEP

Discharge assembly:
 Blank = Standard
 DB = Drainback
 CW = Cold weather

Panel:
 DD = Demand dosing
 TDA = Timed dosing, analog
 TDD = Timed dosing, digital

Pump flow rate (nominal):
 10 = 10 gpm (0.6 L/sec) with ¼-in. (6-mm) flow control
 20 = 20 gpm (1.3 L/sec)
 30 = 30 gpm (1.9 L/sec)
 50 = 50 gpm (3.2 L/sec)

Biotube EasyPak™ pump vault, 15-inch vault